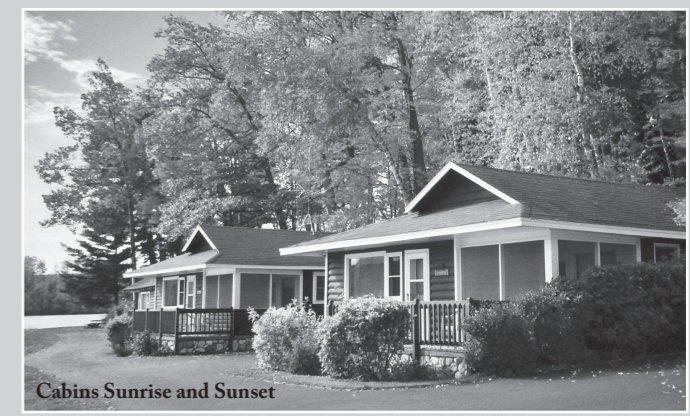


Rental Unit Name <small>All units are located in Lac du Flambeau, Wisconsin - Except Fiddler's Creek</small>	RENTAL RATES at DILLMAN's				Rate based on up to Number of Adults	Sleeps up to	Number of Bedrooms	Queen Beds	Full Beds	Twin Beds	Sofa Beds	Bathrooms		Fireplace	Screened Porch or Sun Deck	Television	Air Conditioned	Pets Allowed	Telephone
	High Season \$ per		Low Season \$ per																
	Night	Week	Night	Week															
Chalet – 4 Townhouses	250	1,500	195	1,235	4	6	2	1†		2	1	2	Full Kitchen	Gas	SP & SD	TV VCR Satellite †	Yes	Yes	†
Bayview Lodge	370*	2,380	260*	1,600	7	10	3	2		4	1	2	Full w/dishwasher	Gas	Screened Porch	TV VCR DVD Sat	Yes	No Cats	Yes
Northern Lodge	345*	2,200	260*	1,600	6	9	3	2	2	1	1	2	Full Kitchen	Gas	Screened Porch	TV VCR Satellite	Yes	Yes	Yes
Badger Lodge	180	1,150	155	995	3	6	Studio	1	1		1	1	Full Kitchen	Gas	Sun Deck	TV VCR Satellite	Yes	Yes	
Lodge Annex – 8 Rooms	115	700	99	693	Per Room	30	8		12	4	2	8	One Full Kitchen		SP & SD	TV VCR DVD Sat	Yes	Yes	Yes
Grand View East – House	440*	2,900	310*	1,700	7	13	4	2	2	3	2	2.5	Full w/dishwasher	Wood	SP & SD	TV VCR Satellite	Yes	Yes	Yes
Grand View West – House	440*	2,900	310*	1,700	7	10	4	3		2	2	2	Full w/dishwasher	Wood	SP & SD	TV VCR Satellite	Yes	Yes	Yes
Northshore Lakeview – 4 Units	130	840	115	735	2	4	Studios	1		1	1	1	Efficiencies		Sun Deck	TV VCR DVD Sat	Yes	Yes	
Northshore Peninsula – 4 Units	120	775	100	645	2	5	Studios		2		1	1	Efficiencies		Sun Deck	TV VCR DVD Sat	Yes	Yes	
Fiddler's Creek – Naples, Florida	Inquire for rates - Monthly Rentals Only					8	3	2			2	3	Full w/dishwasher		Screened Porch	TV VCR DVD Sat	Yes	Yes	Yes
Lakeside Cabins	2 Sunrise	270	1,700	205	1,295	5	6	2	1	1	1	1	Full Kitchen		SP & SD	TV VCR Satellite	Yes	Yes	
	3 Sunset	270	1,700	205	1,295	5	7	2	1	1	2	1	Full Kitchen		SP & SD	TV VCR Satellite	Yes	Yes	
	4A First Honeymoon	150	950	115	735	3	3	Studio		1	1		Efficiency		Sun Deck	TV VCR Satellite		Yes	
	4B Second Honeymoon	185	1,165	155	995	3	3	1	1		1		Full Kitchen		Sun Deck	TV VCR Satellite	Yes	Yes	
	5 Fisherman's	260	1,625	205	1,295	5	8	2	3	1		1	2	Full Kitchen		Sun Deck	TV VCR DVD Sat	Yes	No Cats
	6 Owl Moon	285	1,710	205	1,295	5	8	3	1K1Q	1	2	1	2	Full Kitchen		Screened Porch	TV VCR DVD Sat		No Cats
	7A Little Rascals	115	735	95	615	3	4	Studio	1		1		1	Efficiency		Sun Deck	TV VCR Satellite		Yes
	7B Little Rascals	125	795	108	700	2	4	Studio	1		2		1	Full Kitchen		Sun Deck	TV VCR Satellite		Yes
	8 Little Denmark	260	1,625	205	1,295	5	6	2	1	1	1	1	2	Full Kitchen	Wood	Sun Deck	TV VCR Satellite	Yes	Yes
	9A Golden Pond	185	1,165	145	945	3	5	1	1			2	1	Full Kitchen	Wood		TV DVD Satellite	Yes	No Cats
	9B Golden Pond	170	1,095	145	945	3	5	1		1	1	1	1	Efficiency	Wood		TV DVD Satellite	Yes	No Cats
10B Henzl's	140	875	125	785	3	4	Studio	1			1	1	Efficiency	Wood		TV VCR Satellite	Yes	Yes	
10C Henzl's	130	825	120	750	2	3	Studio	1			1	1	Efficiency			TV VCR Satellite	Yes	Yes	
10 Extra bedroom	65	410	55	345	1	3	Studio	1		1			Share B or C's					Yes	
11 Hilltop	NA	2,900	310*	1,700	7	17	4		8	1		2	Full Kitchen	Wood	Sun Deck	TV DVD Satellite	Yes	No Cats	

# Dillman's Rate Sheet

Quiet, peaceful Dillman's Bay Resort and White Sand Lake Condominiums are located on a lush green peninsula that is surrounded by crystal clear White Sand Lake. Choose from two-bedroom contemporary chalets, one- to three-bedroom cozy lakeside cabins, homes and lodges, plus one- to four-bedroom studio efficiencies or our traditional, eight bedroom guest house. The resort can accommodate up to 220 people.

We provide family reunion and vacation planning services to assist with weddings, executive retreats, art programs, golf outings and motor coach itineraries. Catered meals are available at fireplaced Main Lodge Café and Sand Bar. Units are equipped with BBQ's, picnic tables, supplied kitchen, hair dryers, linens, towels, TV/VCR and some with DVD and satellite. There is a mid-week towel exchange.



## Events & Activities at Dillman's

- Complimentary fishing seminar, pontoon boat ride, paddleboat, sailboat, kayaks, canoes and bikes
- Guided fishing trips and various watercraft in covered marina for rent
- Swimming and lounging at four sandy beaches
- Wooded nature trails for hiking and exploring
- Children's playground, tennis and basketball courts
- Children meet others for movies, table tennis and games in the Round House recreational room
- Weekly summer piñata breaks and s'more roasts
- Fire pit and barbeque area for meals
- Massage therapy
- Guest directories provided in units with local information
- Creative Art Workshops

Nearby Dillman's vacationers can find many quaint stores for shopping, numerous restaurants, fifteen golf courses, horseback riding and amusement parks. You can also enjoy live theatre, movie theatres, Authentic Chippewa village, Powwows, Lumberjack Shows, Cultural Museum and Lake of the Torches Casino.

Visit [www.dillmans.com](http://www.dillmans.com) for individual and group Spring and Fall packages. You can also view color photos and receive additional information online. **Dillman's is smoke free and wheelchair accessible.**

## Business Center Amenities

- Free wireless service in main lodge
- Business center with copier, fax, mail, UPS service

\* Minimum of 3 nights.  
† Chalet #2 has a king bed, telephone, and DVD player. Chalet #4 has a queen and three twin beds. See Reverse.

**DEPOSIT POLICY:** Reservations will be held for two weeks without deposit. A deposit depends on length of vacation. If less than a week, one night's rental is required. If reserving a week's rental, than a \$500 deposit is required. Deposits will be applied to the last day of your confirmed reservation. A full refund will be made minus a \$50 service charge for cancellations received at least two weeks prior to vacation. If you cancel within two weeks of your arrival date, you will be charged for your entire stay. In the event of an early departure the entire rate will be charged. Check-in after 3 PM. Check-out before 10 AM. **Additional guests** above the number in the "Rate Based On" column cost \$40 per night & \$260 per week. **Children's rates:** under 12 years are 50% of adult cost. No cost under 2 years of age. Cribs and roll-a-ways are available. **Pet Policy:** \$15 per night per pet and may not be left unattended in units. **Preferred method of payment is personal check or cash.** We accept MasterCard, Visa and American Express.

Prices subject to change, effective 5/2011.



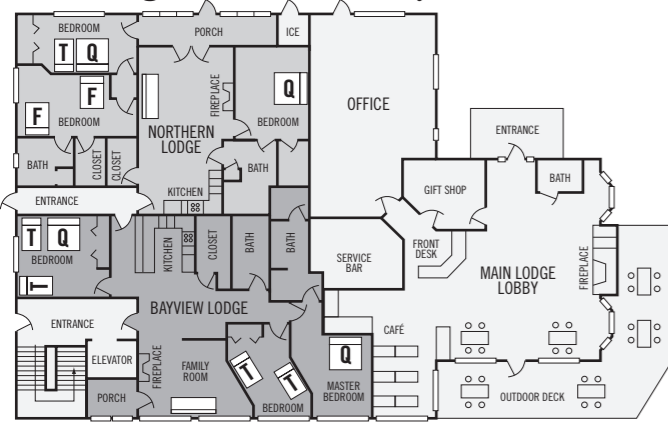
## Dillman's is celebrating over 77 years of creating memories for guests

Dillman's Bay Resort  
Post Office Box 98  
Lac du Flambeau  
Wisconsin 54538

Phone 715-588-3143  
vacations@dillmans.com  
www.dillmans.com  
Fax 715-588-3110

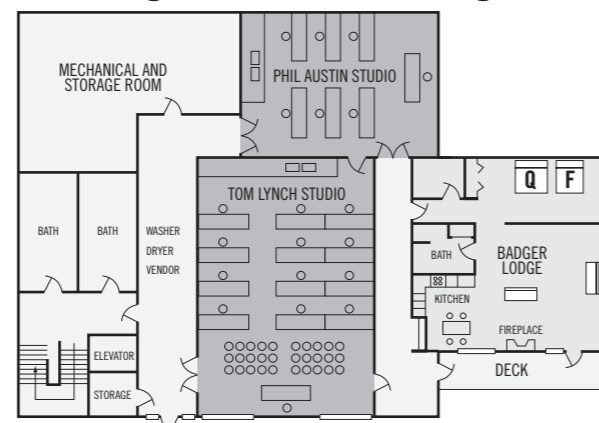


## main lodge – northern & bayview



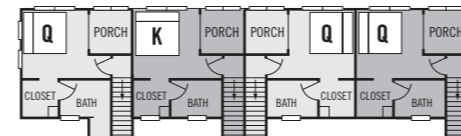
MAIN FLOOR

## main lodge – two studios & badger

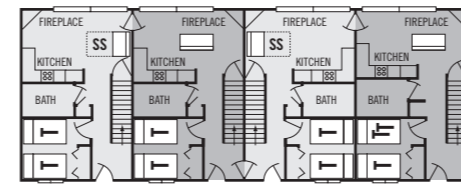


GROUND FLOOR

## chalet townhouses – four units

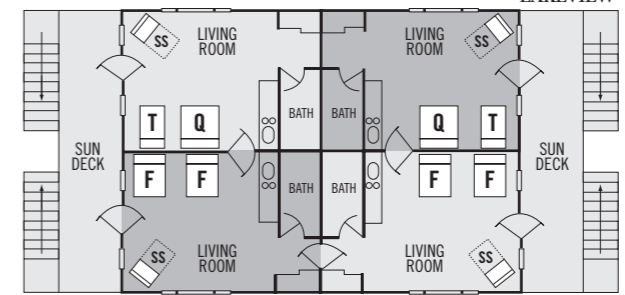


SECOND FLOOR



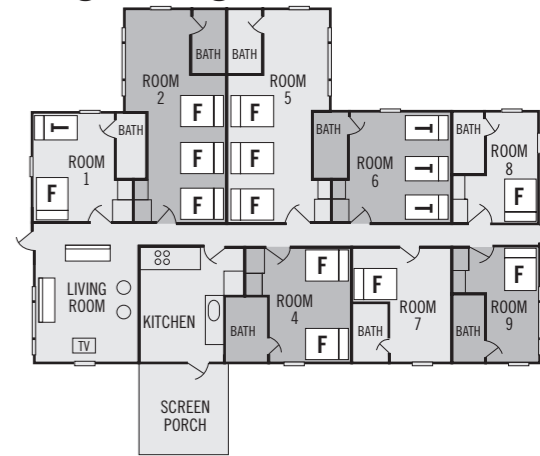
UNIT 1 UNIT 2 UNIT 3 UNIT 4  
GROUND FLOOR

## northshore motel – two floors

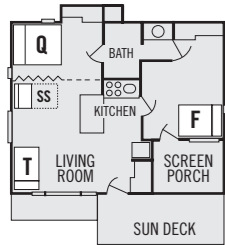


PENINSULA VIEW

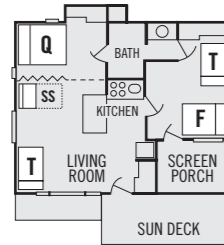
## lodge annex guesthouse



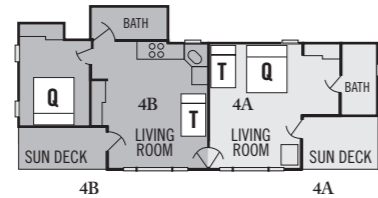
## cabin 2



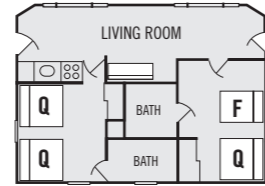
## cabin 3



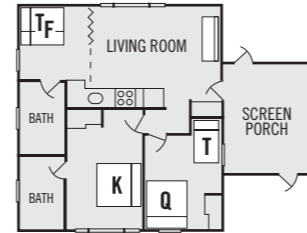
## cabin 4



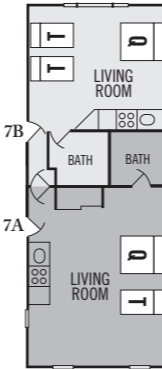
## cabin 5



## cabin 6



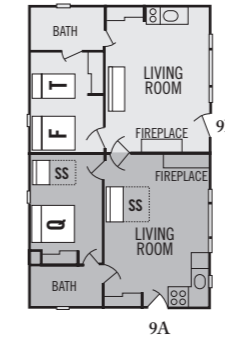
## cabin 7



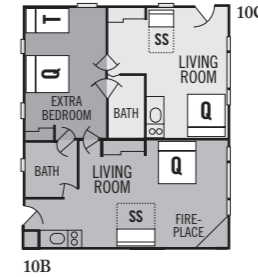
## cabin 8



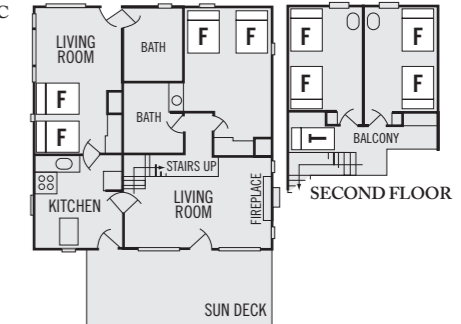
## cabin 9



## cabin 10



## cabin 11



## LODGE UNITS

Spacious Lodge accommodation condos have been created utilizing part of the area in the Main Lodge. Bayview Lodge and Northern Lodge are adjoining and can be rented as one unit.

**Bayview Lodge** has one bedroom with queen bed, second bedroom with queen and two twin beds, third has two twin beds and fireplaced living room has futon sleeper. Screened porch over looking bay and pier/beach.

**Northern Lodge** has one bedroom with a queen, second bedroom with queen and a twin, third with two full beds, fireplace, full kitchen and screened porch.

**Badger Lodge** has one sleeping area with a queen and full bed, great room with pullout couch, fireplace, full kitchen and walk-out deck that over looks the bay.

## CHALETs

Four interconnecting chalet two-story townhouses have two bedrooms each. Upstairs has one queen bed (#2 has a king), walk-in closet/bathroom, and screened porch. Lower level has one bedroom with two twin beds (#4 has a bunk and a twin), bath, full kitchen, great room with fireplace, TV/VCR (#2, #3, #4 with Satellite), sofa sleeper and a walk-out deck overlooking beach and pier. All Chalets have A/C.

## NORTHSHORE CONTEMPORARY MOTEL

This two-story motel has four units per floor and two decks. There are connecting doors between rooms, so floors can be rented as a whole. Studios have efficiency kitchens with a microwave, refrigerator and range. Some are handicap accessible and some have whirlpool tub/shower combinations.

**Lakeview Rooms** have a queen, twin, and sleeper sofa. **Peninsula View Rooms** have two full beds and a sleeper sofa.

## LODGE ANNEX GUESTHOUSE ROOMS

This rustic motel can sleep up to 30 people. The eight bedrooms have various bed arrangements and private baths. There is a shared full kitchen/dining room, glass/screen porch and living room. Great for family reunions and retreats.

## LAKESIDE CABINS

**Cabin 2** has one bedroom with a full, living room with a queen, and sofa sleeper, full kitchen, screened porch and deck and is located on the water's edge.

**Cabin 3** has one bedroom with a full and a twin bed, living room with a queen, a twin, and sofa sleeper, full kitchen, screened porch, deck and is located on the water's edge.

**Cabin 4** can be reserved as a whole unit. There are connecting doors. **Cabin 4A** has a queen bed and a twin bed, efficiency kitchen, deck and is located on the water's edge. **Cabin 4B** has one bedroom with a queen bed, great room with a twin bed, full kitchen, deck and is located on the water's edge.

**Cabin 5** two bedrooms one with two queens the second with one queen and one full, two baths, full kitchen, living area with sofa bed, deck and has a lakeview.

**Cabin 6** has two bedrooms, one with a king the second with a queen and twin bed, a great room has a full and twin bunk bed plus double futon, full kitchen, two baths, screened porch and has a lakeview.

**Cabin 7** can be reserved as a whole unit. There are connecting doors. **Cabin 7A** has one queen bed and one twin bed, efficiency kitchen and deck. **Cabin 7B** has one queen bed and two twin beds, full kitchen, deck and has a lakeview.

**Cabin 8** has two bedrooms, one with a full and twin bed the second with a queen bed, a great room with one sofa sleeper and fireplace, two baths, full kitchen, deck and has a lakeview.

**Cabin 9** can be reserved as a whole unit. There are connecting doors. **Cabin 9A** has one bedroom with a queen bed and a twin sofa sleeper, a great room with fireplace, full sofa sleeper, full kitchen and has a lakeview. **Cabin 9B** has one bedroom with a full bed and a twin bed, a great room with fireplace, queen futon, loveseat, kitchen efficiency and has a lakeview.

## LAKESIDE CABINS

**Cabin 10** can be reserved as a whole unit. There are connecting doors. **Cabin 10B** has a queen bed and double sofa sleeper, kitchen efficiency, fireplace, and has a lakeview. **Cabin 10C** has a queen bed and a twin sofa sleeper, kitchen efficiency and has a lakeview. **Cabin 10's extra bedroom** has a queen and a twin bed, shares 10B or 10C's bath.

**Cabin 11**, a two story cabin with four bedrooms, each has two full beds with an extra twin on the second floor. Double story fireplace in living room, full kitchen, dining room, two baths, large porch and has a lakeview.

## LAKESIDE GRAND VIEW HOUSE

**Grand View East** and **Grand View West** are two complete duplex homes each with four bedrooms, 2 baths, kitchen with dishwasher, washer/dryer, A/C, living room, fireplace, screened porch, shared sun deck and private beach with pier.

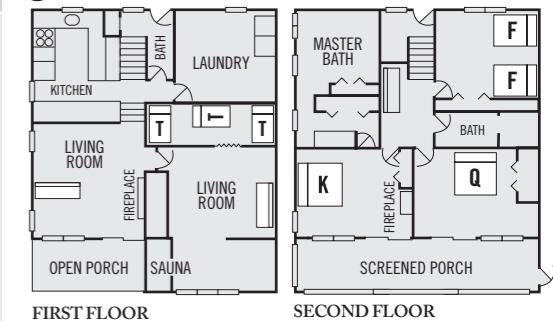


Cabin Owl Moon

**KEY**

- King Bed
- Queen Bed
- Full Bed
- Twin Bed
- Sleeper Sofa
- Sofa or Futon

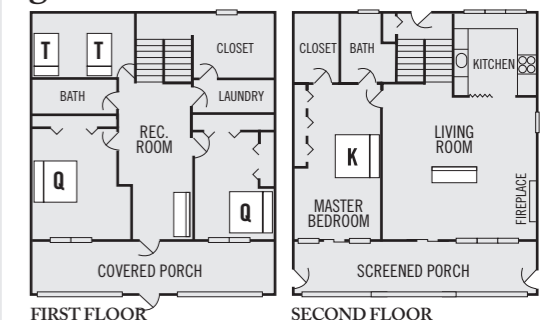
## grand view east – two floors



FIRST FLOOR

SECOND FLOOR

## grand view west – two floors



FIRST FLOOR

SECOND FLOOR